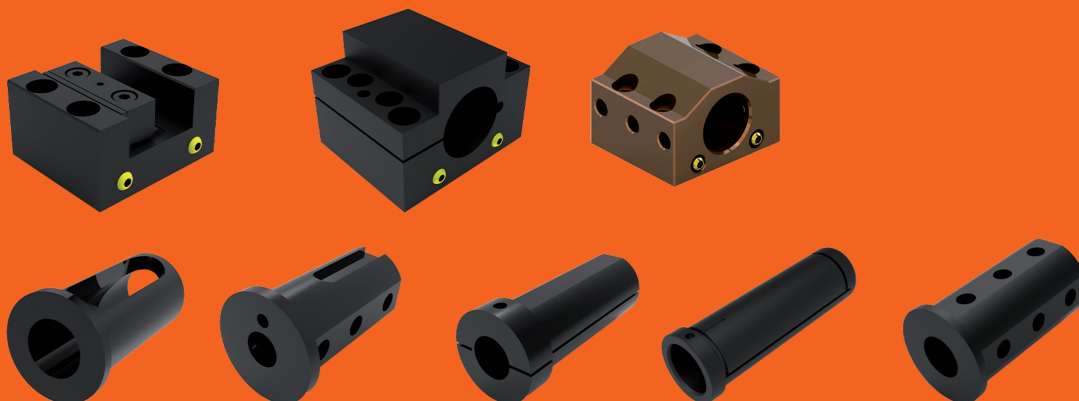


**PROMINENT**<sup>TM</sup>  
— SOLUTIONS WITH INNOVATION —

**SLOTTED TOOL DISC &  
TOOL HOLDERS** FOR  
CNC TURNING & TURNMILL CENTERS

*HOLDING THE POWER  
TO **CHANGE***



[www.prominenttools.com](http://www.prominenttools.com)



Dear Customer

It is indeed our pleasure to present our comprehensive new catalogue to you.

We have endeavoured and developed a user friendly catalogue, which you may find very helpful. Quality is the essence of our business, & is all pervasive in our manufacturing operations. You may observe same quality pursuit, in this latest catalogue of ours also.

Our new introductions BMT Tool Holders, VDI Tool holders DIN 69880 through coolant reduction sleeves & slit sleeves fill an important need, for more, high speed machining applications, especially in the field of aerospace industry.

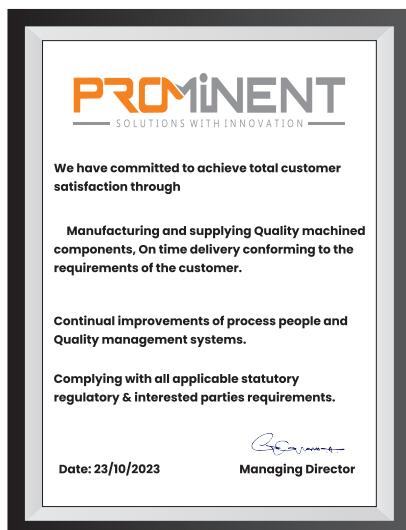
Our customer friendly, expert application engineers, with their available for you, if required, for developing appropriate cost effective tool holding solution, we are always at your services, for any special requirements of yours too. Which is our specialty and well recognized by discerning customers.

Your valued suggestions are always welcome.

STARTED  
**2021**

**20**  
EXPERIENCE

COMMITTED  
TO MEET  
AND EXCEED  
CUSTOMER  
EXPECTATIONS  
— IN —  
QUALITY  
DELIVERY  
C O S T



We are proud to announce that we are an ISO 9001:2015 Company re certified by TUV INDIA



Our Commitment to Greater & Consistent Quality is the Driving Force Behind Our Quest for Customer Satisfaction



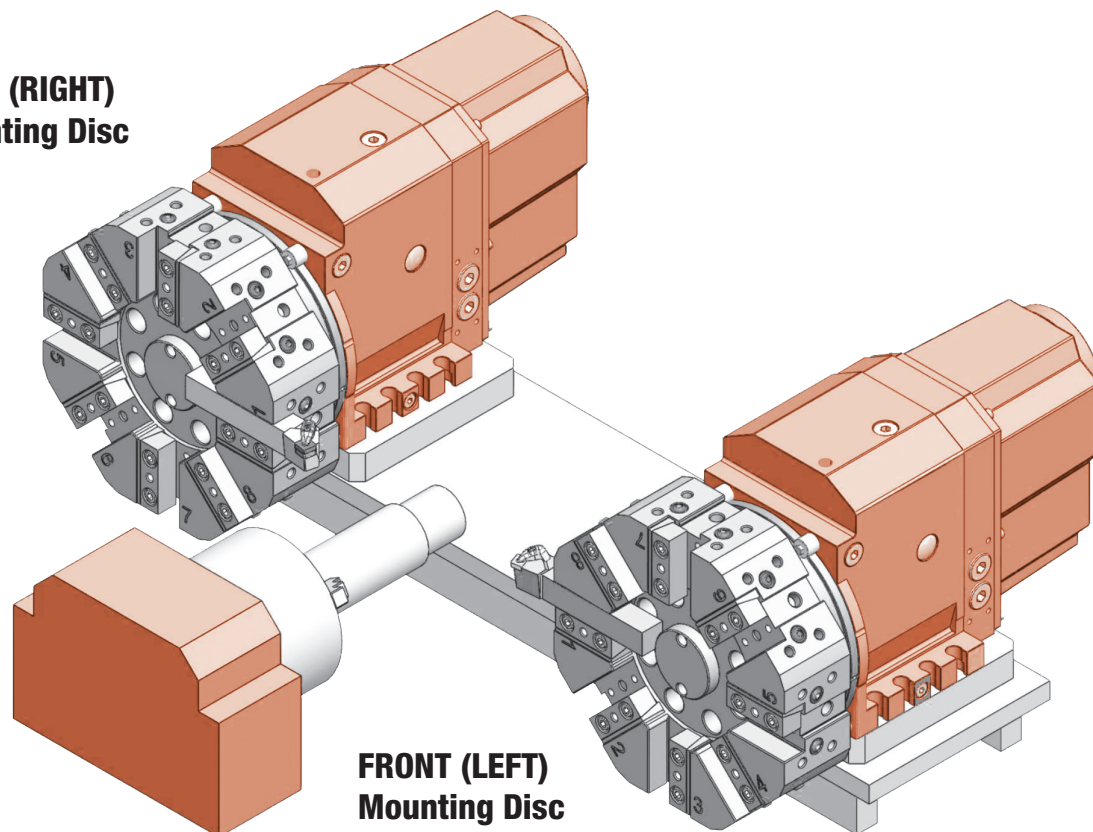


## TOOL DISCS FEATURES

- Tool discs available in 8 & 12 station as our standard
- Discs made of forged, Medium Carbon steel & Toughened up to  $20\pm 2$  HRC
- Finish machining on precision machining centers to ensure accuracies.
- Suitable for fitment on both flat and slant bed CNC lathes
- Available in right version and left version mounting
- Suitable for fitment on Pragati, Diplomatic, Sauter, Baruffaldi & Nexco (goldensun cosmos) turrets.
- Customized design can be supplied upon request.

## TOOL DISC MOUNTING POSITION

**REAR (RIGHT)  
Mounting Disc**

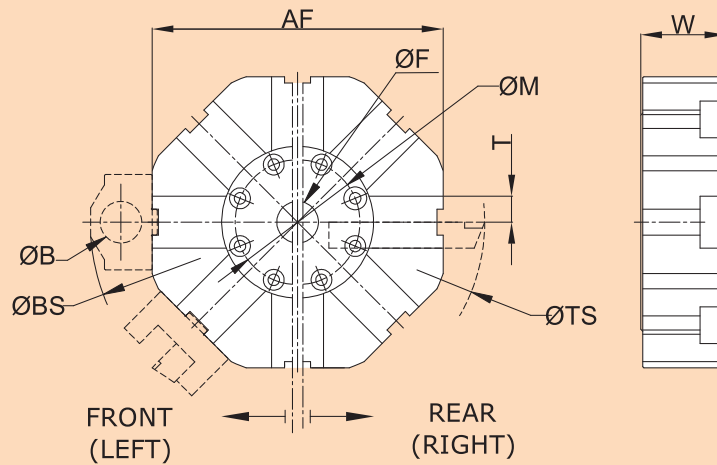
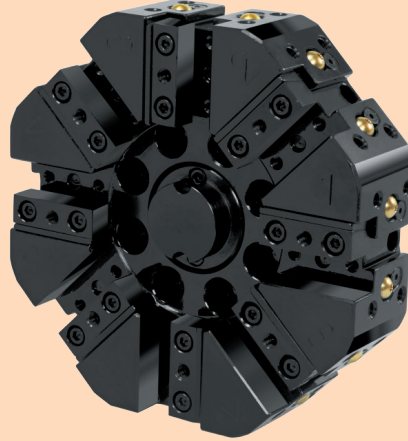


**FRONT (LEFT)  
Mounting Disc**





## SLOTTED TOOL DISCS - 8 STATION



TURRET TYPE	T (Tool size)	AF	W	ØBS	ØTS	ØF	ØM	ØB max	ORDER CODE
Diplomatic-BSV-N-100, Sauter 05-480-510, Baruffaldi-TOE-100, Pragati BTP-50,	16	180	52	251	238	25	70	25	STD50816180
	20	200	55	306	292	25	70	32	STD50820200
Diplomatic-BSV-N-120, Baruffaldi-TOE-120, Sauter 05-480-512, Pragati BTP-63,	16	200	52	271	256	30	90	25	STD63816220
	20	220	62	326	296	30	90	25	STD63820220
Diplomatic-BSV-N-160, Baruffaldi-TOE-160, Sauter 05-480-516, Pragati BTP-80,	20	250	62	356	324	40	120	32	STD80820250
	25	280	82	400	360	40	120	40	STD80825280
Diplomatic-BSV-N-200 Baruffaldi-TOE-200, Sauter 05-480-520, Pragati BTP-100,	25	304	82	424	384	50	145	40	STD100825304
	32	350	97	504	440	50	145	50	STD100832350
Diplomatic-BSV-N-250, Baruffaldi-TOE-250, Sauter 05-480-525, Pragati BTP-125,	32	380	97	534	470	63	182	50	STD125832380
	40	400	97	543	500	63	182	50	STD125840400
Diplomatic-BSV-N-320, Baruffaldi-TOE-320, Sauter 05-480-532, Pragati BTP-160	40	480	126	643	616	80	220	60	STD160840480

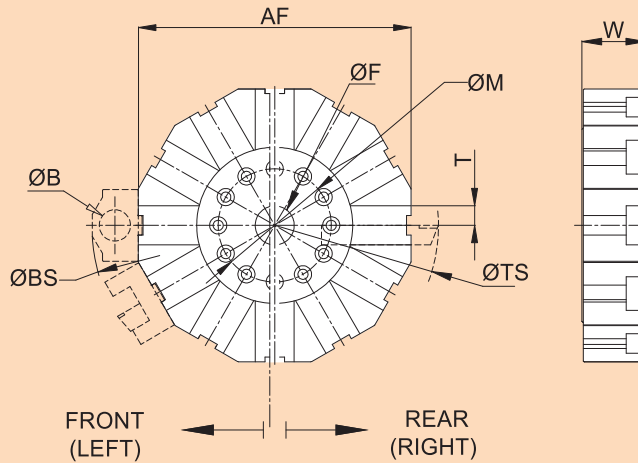
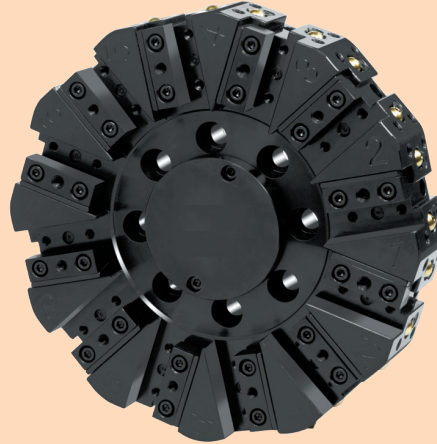
**NOMENCLATURE FOR ORDER CODE** | SLOTTED TOOL DISC - **STD** | TURRET TYPE - **XX** | NO OF STATION - **X** | TOOL SHANK SIZE - **XX**  
DISC AF SIZE - **XXX**

• Customized design can be supplied upon request. • All dimensions are in mm.





**SLOTTED TOOL DISCS - 12 STATION**



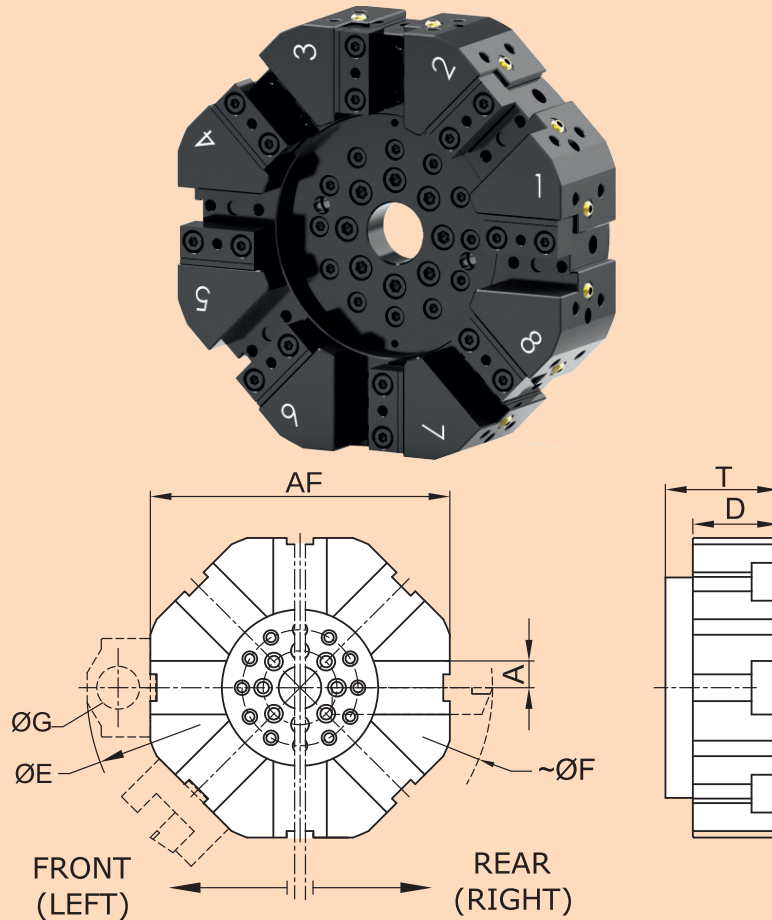
TURRET TYPE	T (Tool size)	AF	W	ØBS	ØTS	ØB max	ØF	ØM	ORDER CODE
Duplomatic-BSV-N-120, Baruffaldi-TOE-120, Sauter 05-480-512, Pragati BTP-63	16	236	52	307	270	25	30	90	STD631216236
Duplomatic-BSV-N-160, Baruffaldi-TOE-160, Sauter 05-480-516, Pragati BTP-80	20	286	62	392	348	32	40	120	STD801220286
Duplomatic-BSV-N-200, Baruffaldi-TOE-200, Sauter 05-480-520, Pragati BTP-100	25	350	82	470	420	40	50	145	STD1001225350
Duplomatic-BSV-N-250, Baruffaldi-TOE-250, Sauter 05-480-525, Pragati BTP-125	32	436	97	590	525	50	63	182	STD1251232436
Duplomatic-BSV-N-320, Baruffaldi-TOE-320, Sauter 05-480-532, Pragati BTP-160	40	565	126	729	645	60	80	220	STD1601240565

**NOMENCLATURE FOR ORDER CODE** | SLOTTED TOOL DISC - **STD** | TURRET TYPE - **XX** | NO OF STATION - **XX** | TOOL SHANK SIZE - **XX**  
DISC AF SIZE - **XXX**

• Customized design can be supplied upon request. • All dimensions are in mm.



## HYDRAULIC TOOL DISCS (HTD) - 8 STATION



TURRET TYPE	A (TOOL SIZE)	AF	T	D	ØE	~ØF	ØG	ORDER CODE
Pragati HTP-63-8	20	220	96	60	325	286	32	HD63820220
Pragati HTP-63-8	20	228	96	60	333	294	32	HD63820228
Pragati HTP-63-8	25	240	101	80	359	326	40	HD63825240
Pragati HTP-80-8	20	280	105	60	403	352	32	HD80820280
Pragati HTP-80-8	25	280	105	80	399	366	40	HD80825280
Pragati HTP-100-8	25	304	105	80	443	370	40	HD100825304
Pragati HTP-100-8	25	320	110	80	459	400	40	HD100825320
Pragati HTP-100-8	32	320	124	95	473	412	50	HD100832320
Pragati HTP-125-8	25	380	110	80	519	460	40	HD125825380
Pragati HTP-125-8	32	380	124	95	532	470	50	HD125832380
Pragati HTP-125-8	32	420	124	95	472	510	50	HD125832420

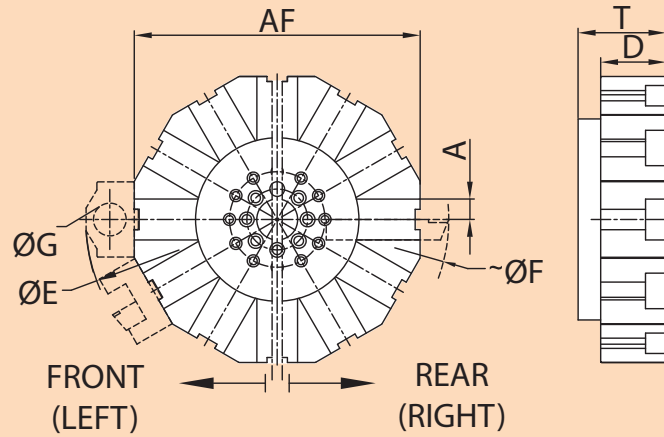
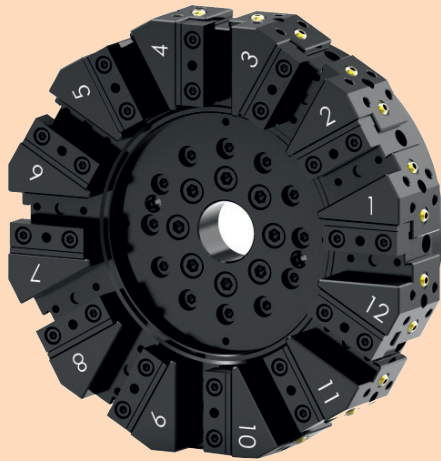
**NOMENCLATURE FOR ORDER CODE** | HYDRAULIC TOOL DISC - **HD** | TURRET TYPE - **XX** | NO OF STATION - **X** | TOOL SHANK SIZE - **XX**  
DISC AF SIZE - **XXX**

• Customized design can be supplied upon request. • All dimensions are in mm.





## HYDRAULIC TOOL DISCS (HTD) - 12 STATION REAR VERSION



TURRET TYPE	A (TOOL SIZE)	AF	T	D	ØE	~ØF	ØG	ORDER CODE
Pragati HTP-63-12	16	236	87	51	307	270	25	HR631216236
Pragati HTP-80-12	20	286	105	60	391	325	32	HR801220286
Pragati HTP-80-12	25	350	105	80	469	430	40	HR801225350
Pragati HTP-100-12	25	350	110	80	489	420	40	HR1001225350
Pragati HTP-125-12	32	436	124	95	588	526	50	HR1251232436
Pragati HTP-125-12	32	480	124	95	632	570	50	HR1251232480

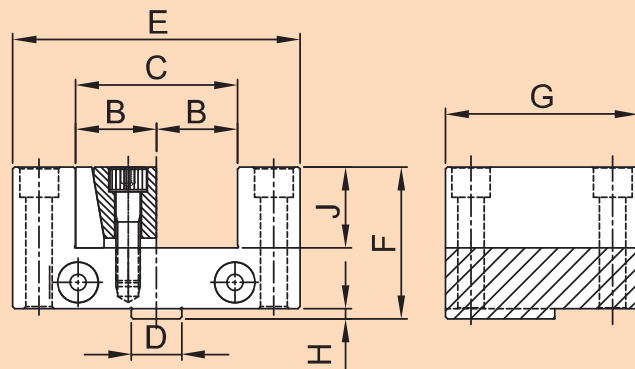
## 12 STATION FRONT VERSION

TURRET TYPE	A (TOOL SIZE)	AF	T	D	ØE	~ØF	ØG	ORDER CODE
Pragati HTP-100-12	25	350	110	80	489	420	40	HF1001225350
Pragati HTP-125-12	25	380	110	80	519	494	40	HF1251225380S
Pragati HTP-125-12	25	380	110	80	519	494	40	HF1251225380
Pragati HTP-125-12	32	436	124	95	588	526	50	HF1251232436210
Pragati HTP-125-12	32	436	124	95	588	526	50	HF1251232436110

• Customized design can be supplied upon request. • All dimensions are in mm.



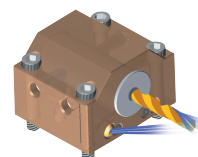
## TOOL HOLDERS AXIAL TOOL HOLDER



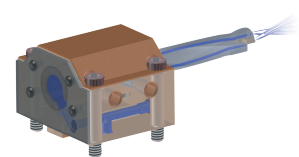
TOOL DISC TYPE		A	B (TOOL SIZE)	C	D	E	F	G	H	J	ITEM NAME	ORDER CODE
STD 50-8-12		12	12	24	12	56	31	43	4	12	PATH 12-12	AH1212
STD50-8-16 STD 63-8-16	STD 63-12-16 HD 63-12-16	16	16	32	16	66	37	51	5	16	PATH 16-16	AH1616
STD 50-8-20 STD 63-8-20 STD 80-8-20 HD 63-8-20 HD 80-8-20	STD 80-12-20 HD 80-12-20	20	20	40	16	76	45	60	5	20	PATH 20-20	AH2020
STD 80-8-25 STD 100-8-25 HD 80-8-25 HD 100-8-25 HD 125-8-25	STD 100-12-25 STD 125-12-25 HD 100-12-25 HD 125-12-25	25	25	50	25	92	55	80	5	25	PATH 25-25	AH2525
STD 100-8-32 STD 125-8-32 HD 125-8-32	STD 125-12-32 HD 125-12-32	32	32	64	25	114	65	95	5	32	PATH 32-32	AH3232
STD 125-12-40		40	40	80	25	142	75	95	5	40	PATH 40-40	AH4040
STD 160-8-40 STD 160-12-40		40	40	80	40	142	74	124	5	40	PATH 160-40	AH16040

## BORING TOOL HOLDERS

- Highest Tensile Strength of 40kgf/mm and better impact properties.
- Finish machined on Hi-Precision machining centers.
- Interchangeable tool holders. No need for in-line boring on machine.
- Through Coolant Boring Tool Holders also available.
- Suitable sleeves can be used in BTH for different tool sizes.
- Inch series Boring Tool Holders are also available upon request.



External Coolant



Through Coolant

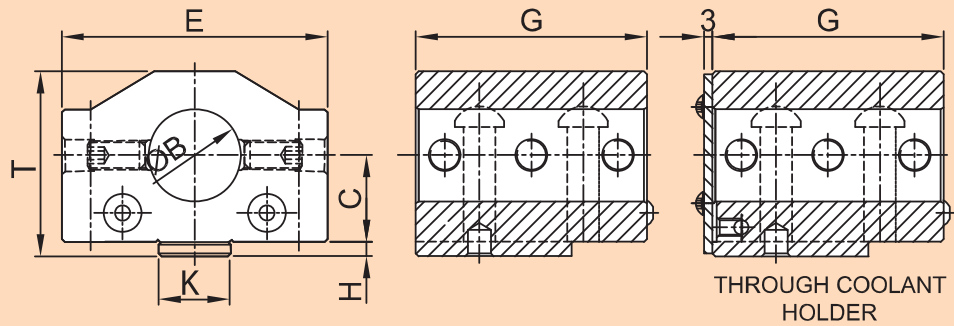
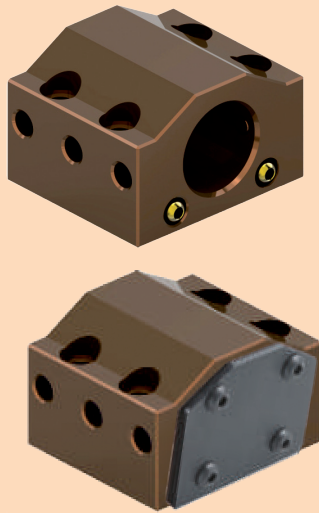
• Customized design can be supplied upon request. • All dimensions are in mm.







**BORING TOOL HOLDERS (BTH) EXTERNAL / THROUGH COOLANT**



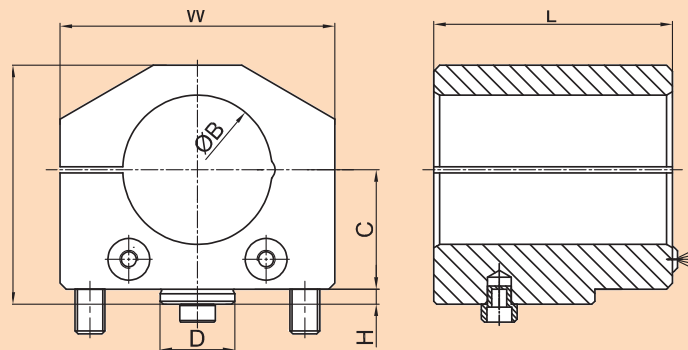
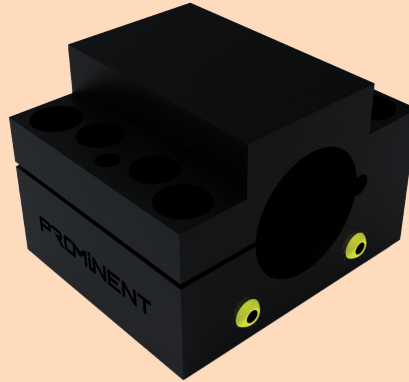
TOOL DISC TYPE	A (TOOL SIZE)	B (BORE SIZE)	C	K	E	T	G	H	TC	ITEM NAME	ORDER CODE	
STD 50-8-12	12	20	18	12	56	35	43	4	*	PBTH 12-20 CH-18	BH122018	
STD 50-8-16	16	20	18	16	66	40	51	5	*	PBTH 16-20 CH-18	BH162018	
STD 63-8-16	16	25	18	16	66	40	51	5	*	PBTH 16-25 CH-18	BH162518	
STD 63-12-16	16	25	32	16	66	40	51	5	*	PBTH 16-25-CH-32	BH162532	
HD 63-12-16	20	20	18	16	76	42.5	60	5	*	PBTH 20-20-CH-18	BH202018	
STD 50-8-20	20	25	18	16	76	42.5	60	5	*	PBTH 20-25-CH-18	BH202518	
	20	32	18	16	76	42.5	60	5	*	PBTH 20-32-CH-18	BH203218	
	20	20	25	16	76	57	60	5	*	PBTH 20-20-CH-25	BH202025	
	20	25	25	16	76	57	60	5	*	PBTH 20-25-CH-25	BH202525	
	20	32	25	16	76	57	60	5	*	PBTH 20-32-CH-25	BH203225	
	20	32	30	16	76	63	60	5	*	PBTH 20-32-CH-30	BH203230	
	20	40	30	16	76	63	60	5	*	PBTH 20-40-CH-30	BH204030	
	20	32	35	16	76	63	60	5	*	PBTH 20-32-CH-35	BH203235	
	STD 80-8-25	25	25	30	25	92	64	80	5	*	PBTH 25-25-CH-30	BH252530
	STD 100-8-25	25	32	30	25	92	64	80	5	*	PBTH 25-32-CH-30	BH253230
HD 80-8-25	25	40	30	25	92	64	80	5	*	PBTH 25-40-CH-30	BH254030	
HD 100-8-25	25	50	30	25	92	73	80	5	*	PBTH 25-50-CH-30	BH255030	
HD 125-8-25	25	32	40	25	92	74	80	5	*	PBTH 25-32-CH-40	BH253240	
STD 100-12-25	25	40	40	25	92	74	80	5	*	PBTH 25-40-CH-40	BH254040	
STD 125-12-25	25	50	40	25	92	74	80	5	*	PBTH 25-50-CH-40	BH255040	
HD 100-12-25	32	40	40	25	114	85	95	5	*	PBTH 32-40-CH-40	BH324040	
HD 125-8-32	32	40	50	25	114	90	95	5	*	PBTH 32-40-CH-40	BH324050	
HD 125-8-32	32	50	50	25	114	80	95	5	*	PBTH 32-50-CH-40	BH325050	
STD 125-12-32	32	40	50	25	114	80	95	5	*	PBTH 32-40-CH-50	BH324050	
HD 125-12-32	32	50	50	25	114	80	95	5	*	PBTH 32-50-CH-50	BH325050	
STD 125-8-40	40	40	35	25	142	75	95	5	*	PBTH 40-40-CH-35	BH404035	
	40	50	35	25	142	75	95	5	*	PBTH 40-50-CH-35	BH405035	
STD 160-8-32	40	50	40	40	142	85	124	5	*	PBTH 40-50-CH-40	BH1605040	
STD 160-8-40	40	60	40	40	142	85	124	5	*	PBTH 40-60-CH-40	BH1606040	
STD 160-12-40												

**NOMENCLATURE FOR ORDER CODE** | BORING TOOL HOLDER - **BH** | TOOL SIZE - **XX** | BORE SIZE - **XX** | CENTER HEIGHT - **XX**  
| THROUGH COOLANT - **TC**

• Customized design can be supplied upon request. • All dimensions are in mm.



## BORING TOOL HOLDERS (BTH) SLIT VERSION



TOOL DISC TYPE	A	B (BORE SIZE)	C	D	W	F	L	H	ITEM NAME	ORDER CODE
STD 80-8-25 STD 100-8-25 STD 100-12-25 STD 125-8-25 STD 125-12-25 HD 80-8-25 HD 100-8-25 HD 100-12-25 HD 125-8-25 HD 125-12-25	25	40	40	25	92	80	80	5	PBTHS 25-40 CH-40	BHS254040
	25	50	40	25	92	80	80	5	PBTHS 25-50CH-40	BHS255040
	25	40	40	25	92	80	160	5	PBTHS 25-40 CH-40 L 160	BHS254040160
	25	25	30	25	92	64	100	5	PBTHS 25-25 CH-30 L 100	BHS252530100
	25	40	40	25	92	80	160	5	PBTHS 25-40 CH-40 L 160-R	BHS254040R
	25	32	30	25	92	64	80	5	PBTHS 25-32 CH-30	BHS253230
	25	40	30	25	92	64	80	5	PBTHS 25-40 CH-30	BHS254030
	25	40	30	25	92	64	130	5	PBTHS 25-40 CH-30 L 130	BHS254030130
	25	40	30	25	92	64	130	5	PBTHS 25-40 CH-30 L 130	BHS254030130
STD 100-8-32 STD 125-8-32 STD 160-8-32 STD 125-12-32 HD 125-12-32	32	40	40	25	114	85	95	5	PBTH 32-40 CH-40	BHS324040
	32	50	40	25	114	85	180	5	PBTHS 32-50-CH-40 L 180	BHS325040180
	32	50	40	25	114	85	95	5	PBTHS 32-50 CH-40	BHS325040
	32	50	70	25	114	117	95	5	PBTHS 32-50-CH-70	BHS325070
STD 125-8-40	40	60	40	25	142	85	95	5	PBTHS 40-60-CH-40	BHS406040
STD 160-8-40 STD 160-12-40	40	40	40	25	142	85	124	5	PBTHS 160-40-CH-40	BHS1604040
	40	50	40	25	142	85	124	5	PBTHS 160-50 CH-40	BHS1605040

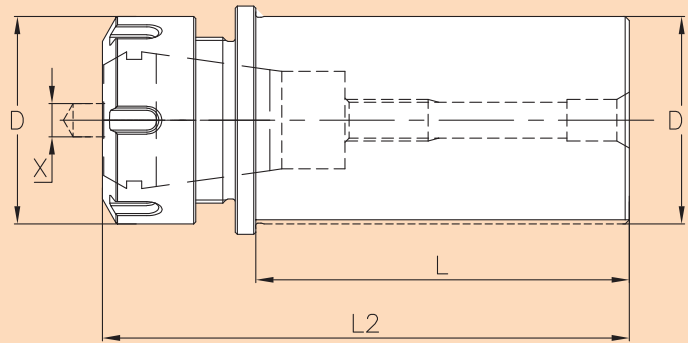
**NOMENCLATURE FOR ORDER CODE** | SLIT TYPE BORING TOOL HOLDER - **BHS** | TOOL SIZE - **XX** | BORE SIZE - **XX** | CENTER HEIGHT - **XX**

• Customized design can be supplied upon request. • All dimensions are in mm.





## ER COLLET HOLDER FOR BORING BAR HOLDER

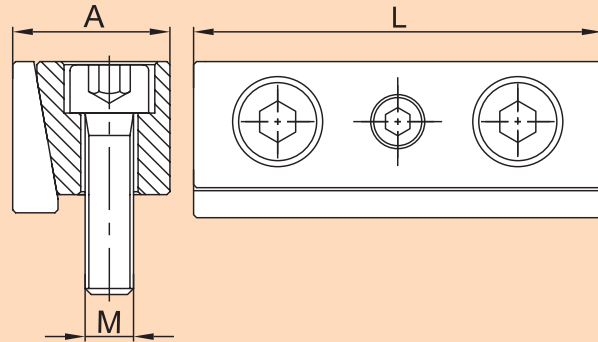


COLLET HOLDER CODE	SUITABLE FOR COLLET	COLLRT CLAMPING CAPACIT (X)	DI (h6)	L	L2	NUT D	SUITS FOR TOOL HOLDER
PCH25ER16-048	ER 16	0.5-10	25	48	81	32	BTH 16-25 BTH 20-25
PCH25ER20-048	ER 20	1	25	48	81	34	
PCH25ER25-048	ER 25	1	25	48	81	42	
PCH32ER16-058	ER 16	0.5-10	32	58	92	32	BTH 20-32
PCH32ER20-058	ER 20	1	32	58	92	34	
PCH32ER25-058	ER 25	1	32	58	92	42	
PCH32ER32-058	ER 32	2	32	58	95	50	BTH 25-32
PCH32ER16-078	ER 16	0.5-10	32	78	112	32	
PCH32ER20-078	ER 20	1	32	78	112	34	
PCH32ER25-078	ER 25	1	32	78	112	42	
PCH32ER32-078	ER 32	2	32	78	115	50	BTH 25-40 BTH 32-40 BTH 40-40
PCH40ER16-078	ER 16	0.5-10	40	78	112	32	
PCH40ER20-078	ER 20	1	40	78	112	34	
PCH40ER25-078	ER 25	1	40	78	112	42	
PCH40ER32-078	ER 32	2	40	78	115	50	BTH 25-50 BTH 32-50 BTH 40-50
PCH50ER16-090	ER 16	0.5-10	50	98	124	32	
PCH50ER20-090	ER 20	1	50	98	124	34	
PCH50ER25-090	ER 25	1	50	98	124	42	
PCH50ER32-090	ER 32	2	50	98	127	50	
PCH50ER16-122	ER 16	0.5-10	50	122	155	32	BTH 160-50
PCH50ER20-122	ER 20	1	50	122	155	34	
PCH50ER25-122	ER 25	1	50	122	155	42	
PCH50ER32-122	ER 32	2	50	122	159	50	

• Customized design can be supplied upon request. • All dimensions are in mm.

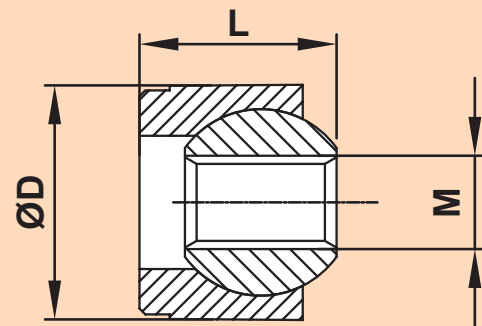
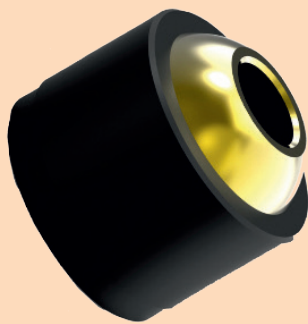


## WEDGE ASSEMBLY



ARTICLE NO.	ITEM NAME	A	L	M
WA1643	W16X43	16	43	6
WA2048	W20X48	20	48	6
WA2054	W20X54	20	54	6
WA2554	W25X54	25	54	8
WA2558	W25X58	25	58	8
WA2568	W25X68	25	68	8
WA3284	W32X84	32	84	10
WA4094	W40X94	40	94	12
WA40109	W40X109	40	109	12
WA207040	W20X70 P40	20	70	8
WA257034	W25X70 P34	25	70	8

## PRESS FIT COOLANT BALL ASSEMBLY



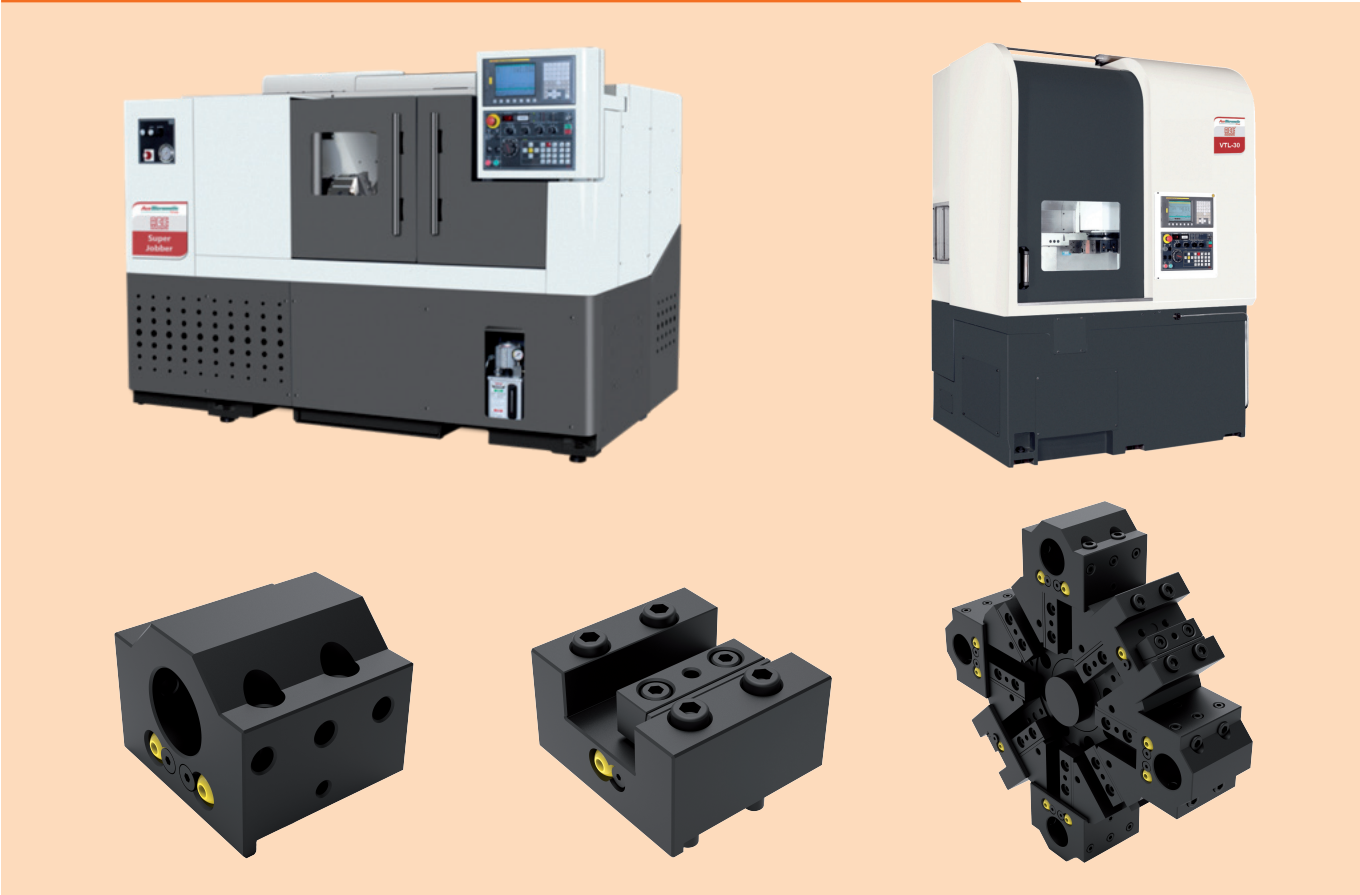
ITEM NAME	ØD	L	M
PFB10 X M4	10	8.4	4
PFB12 X M5	12	10.3	5
PFB12 XM6	12	10.3	6
PFB14 X M5	14	12.5	5
PFB14 X M6	14	12.5	6

• Customized design can be supplied upon request. • All dimensions are in mm.





**ACE MACHINE TOOL DISC & TOOL HOLDERS SELECTION CHART**

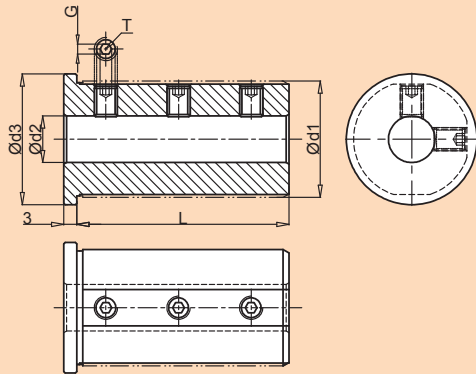


MACHINE NAME	SUITABLE TURRET	SUITABLE TOOL DISC	SUITABLE BOARING TOOL HOLDER	SUITABLE AXIAL TOOL HOLDER
Cub LM, Apollo Delta	BTP-63	STD63820220	BH2032CH25	AH2020
Tutor, Apollo	BTP-63	STD63816200	BH1625CH18	AH1616
CS-16-LM-200	Servo Turret 8 Station	ATD801220320	ABH2032CH30L86 & TC	AAH2020L86
CS 2 -LM 400 / XL 400	Servo Turret 8 Station	ATD80825280	ABH2540CH40L91 & TC	AAH2525L91
Jobber Junior, J 300 LM, Jobber LM/XL, Super Jobber LM/XL, Super Jobber 500 LM/XL	BTP-80	ATD80825280	ABH2540CH40L91 & TC	AAH2525L91
JE 06 LM / XL / RG, JE 08 LM / XL / RG, SJE 06 LM / XL / RG, SJE 08 LM / XL / RG, SJE 10 LM / XL / RG	HTP-80	AHTD801220320T105 & AHTD80825280T105	ABH2032CH30L86, ABHK2540CH40L91 & TC	AAH2020L86 & AAHK2525L91
SJE 10 HT, CSJ-400 RG	HTP-80 12 Station	AHTD801225340T105	ABHP2540CH40L91 & TC	AAHP2525L91
LT-20 C Classic, Vantage 500 LM / XL, Vantage 800 LM / XL, Vantage 1250 LM / XL, VTL-25	BTP-100	ATD100825320 & ATD1001225340	ABH2540CH40L91 & TC ABHP2540CH40L91 & TC	AAH2525L91 & AAHP2525L91
LT-30 630, LT-30 1000, LT-30 1500, Vantage 500 LM / XL, Vantage 800 LM / XL, Vantage 1250 LM / XL, VTL-30, VTL-30 Plus, VTL 300 XL L / R	BTP-125	ATD125825410 & ATD1251225410	ABH2050CH40L91 & TC	AAH2025L91
LT-40 1000, LT-40 2000, LT-40 3000, VTL-40, VTL-45 XL, VTL-400 LM/XL	BTP-160	ATD160832500 & ATD1601232500	-	-

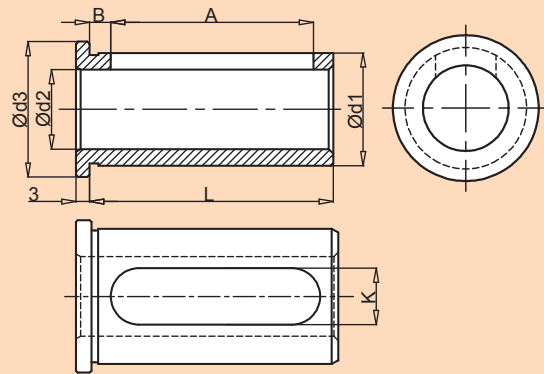
• Customized design can be supplied upon request. • All dimensions are in mm.



## UNIVERSAL REDUCTION SLEEVES



SUITABLE FOR BORING TOOL HOLDERS WITH SMALLER SHANK TOOLS



SUITABLE FOR BORING TOOL HOLDERS WITH LARGE SHANK TOOLS TYPE-K (KEYWAY TYPE)

ARTICLE CODE	Ød1	Ød2	Ød3	L	GRUB SCREW T
RSU200839	20	08	25	39	M6X5
RSU201039		10			M6X5
RSU250850	25	08	30	50	M6X8
RSU251050		10			M8X6
RSU251250		12			M8X6
RSU320859	32	08	37	59	M6X10
RSU321059		10			M8X10
RSU321259		12			M8X8
RSU321659		16			M8X6
RSU400869	40	08	45	69	M6X12
RSU401069		10			M8X12
RSU401269		12			M8X12
RSU401669		16			M8X10
RSU402069		20			M8X8
RSU402569		25			M8X6
RSU500880	50	08	55	80	M6X16
RSU501080		10			M8X16
RSU501280		12			M8X16
RSU501680		16			M10X16
RSU502080		20			M10X12
RSU502580		25			M10X12
RSU503280		32			M10X8

ARTICLE CODE	Ød1	Ød2	Ød3	K	L	A	B
RSUK201239	20	12	25	9	39	32.5	3.5
RSUK201639		16					
RSUK201252	20	12	25	13	52	45.5	3.5
RSUK201652		16					
RSUK251650	25	16	30	13	50	43.5	3.5
RSUK252050		20					
RSUK322059	32	20	37	13	59	51	5
RSUK322559		25					
RSUK403269	40	32	45	17	69	61	5
RSUK504080	50	40	55	17	80	72	5

• Made out of C45 material & toughen to 20±2 HRC

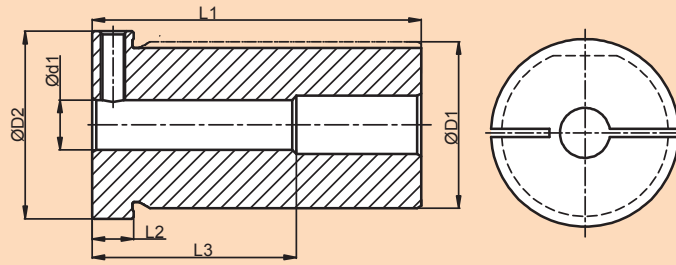
**NOMENCLATURE FOR ORDER CODE** | REDUCTION SLEEVE - **RS** | UNIVERSAL TYPE - **U** | NILL-SMALLER TOOL SHANK & K-LARGER TOOL SHANK - **K**  
| TOTAL LENGTH - **XX** | TOOL SHANK DIAMETER - **XX** | TOOL HOLDER BORE - **XX**

• Customized design can be supplied upon request. • All dimensions are in mm.

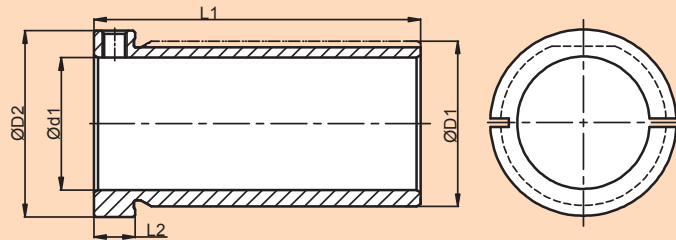




**UNIVERSAL SLIT REDUCTION SLEEVES**



SUITABLE FOR BORING TOOL HOLDERS WITH SMALLER SHANK TOOLS



SUITABLE FOR BORING TOOL HOLDERS WITH LARGE SHANK TOOLS TYPE-K (KEYWAY TYPE)

MATERIAL ID	ØD1	ØD2	Ød1	L1	L2	L3	L3/Ød1 RATIO
RSSE1E2250860	25	30	08	60	10	50	6
RSSE1E2251060			10			50	5
RSSE1E2251260			12			50	4
RSSE1E2251460			14			50	3.5
RSSE1E2320869	32	37	08	69	10	50	6
RSSE1E2321069			10			50	5
RSSE1E2321269			12			50	4
RSSE1E2321469			14			50	3.5
RSSE1E2400879	40	45	08	79	10	50	6
RSSE1E2401079			10			50	5
RSSE1E2401279			12			50	4
RSSE1E2401479			14			50	3.5
RSSE1E2500890	50	55	08	90	10	50	6
RSSE1E2501090			10			50	5
RSSE1E2501290			12			50	4
RSSE1E2501490			14			50	3.5

MATERIAL ID	ØD1	ØD2	Ød1	L1	L2	L1/Ød1 RATIO
RSSE1E2251660	25	30	16	60	10	3.8
RSSE1E2251860			18			3.3
RSSE1E2252060			20			3.0
RSSE1E2321669			16			4.3
RSSE1E2321869	32	37	18	69	10	3.8
RSSE1E2322069			20			3.5
RSSE1E2322569			25			2.8
RSSE1E2401679	40	45	16	79	10	5.0
RSSE1E2401879			18			4.4
RSSE1E2402079			20			4.0
RSSE1E2402579			25			3.2
RSSE1E2403279	50	55	32	90	10	2.5
RSSE1E2501690			16			5.6
RSSE1E2501890			18			5.0
RSSE1E2502090			20			4.5
RSSE1E2502590			25			3.6
RSSE1E2503290			32			2.8
RSSE1E2504090	40	2.3				

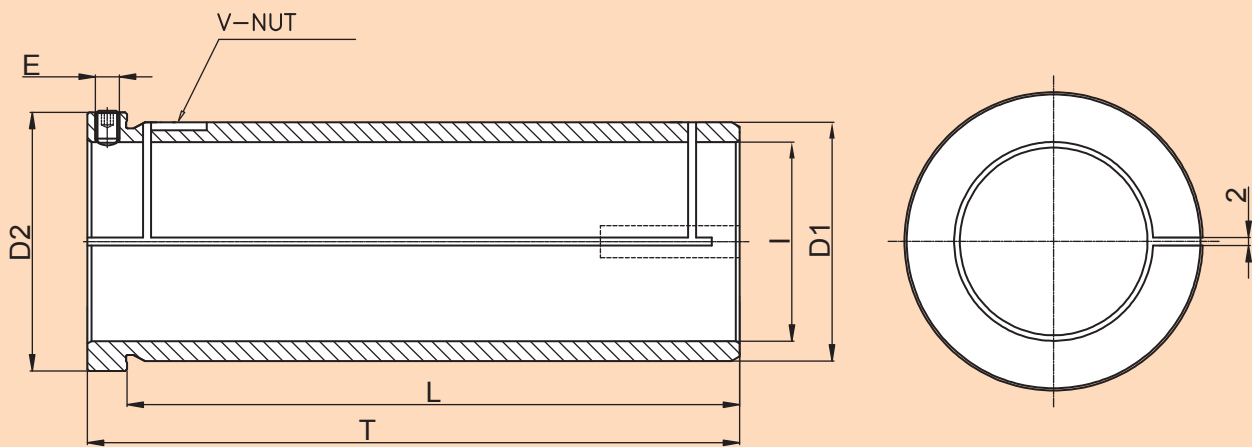
• Made out of En47 material & hardening to 54±2 HRC

**NOMENCLATURE FOR ORDER CODE** | REDUCTION SLEEVE - **RS** | SPLIT TYPE - **S** | SUITABLE FOR E1 & E2 VARIETY - **E1E2**  
TOTAL LENGTH - **XX** | TOOL SHANK DIAMETER - **XX** | VDI TOOL HOLDER BORE - **XX**

• Customized design can be supplied upon request. • All dimensions are in mm.



## PU REDUCTION SLEEVES



CODE	D1	I	L	T	D2	E	TYPE	SUITS FOR TOOL HOLDER
PU1S-3225115	32	25	115	125	37	M6	PU1S	PU1S-32-60
PU1S-4032127	40	32	127	137	45	M6	PU1S	
PU1S-5040127	50	40	127	137	55	M6	PU1S	
PU1S-6050154	60	50	154	164	65	M6	PU1S	

• Made out of En-47 material & hardening to 54±2 HRC

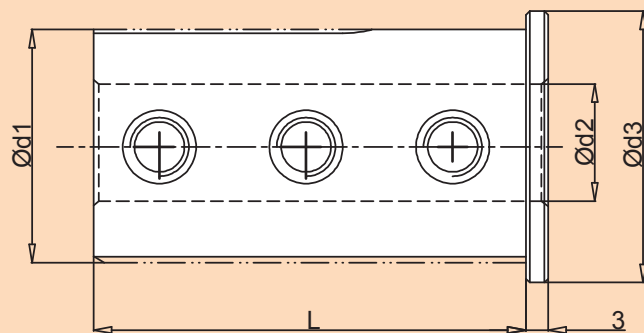
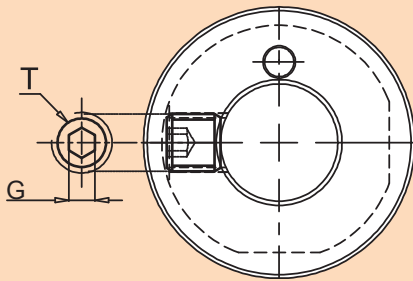
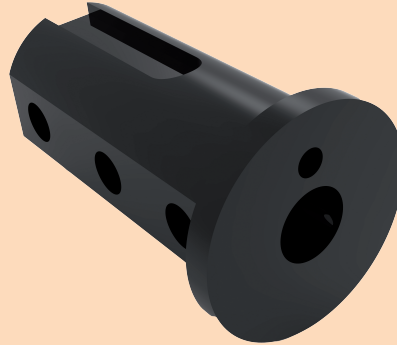
• Customized design can be supplied upon request. • All dimensions are in mm.







## THROUGH COOLANT SLEEVES

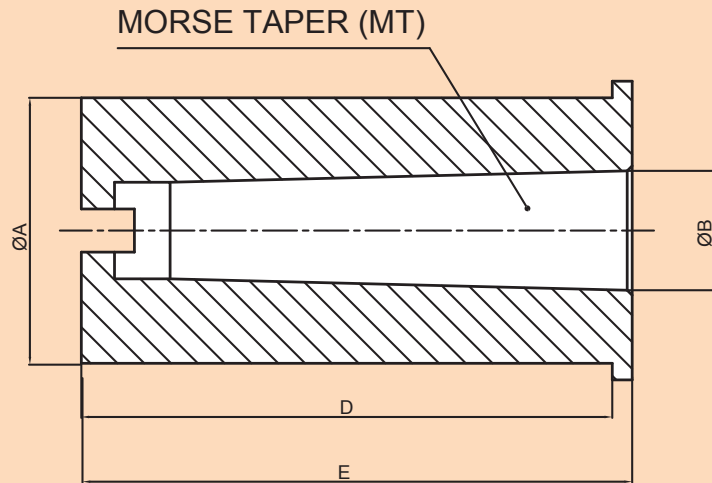
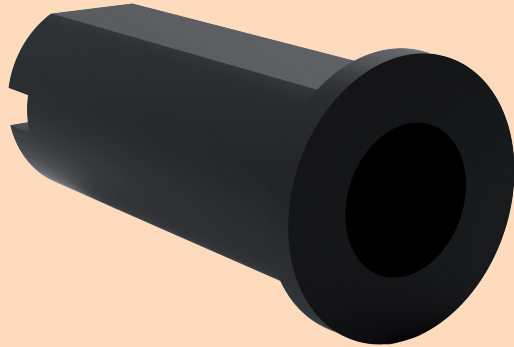


ARTICLE CODE	Ød1	Ød2	Ød3	L	GRUB SCREW T	QTY	G
RSU200839TC	20	08	25	39	M6X5	3	3
RSU250850TC	25	08	30	50	M6X8	3	3
RSU251050TC		10			M8X6	3	4
RSU320859TC	32	08	37	59	M6X10	3	3
RSU321059TC		10			M8X10	3	4
RSU321259TC		12			M8X8	3	4
RSU400869TC	40	08	45	69	M6X12	3	3
RSU401069TC		10			M8X12	3	4
RSU401269TC		12			M8X12	3	4
RSU401669TC		16			M8X10	3	4
RSU500880TC	50	08	55	80	M6X16	3	3
RSU501080TC		10			M8X16	3	4
RSU501280TC		12			M8X16	3	4
RSU501680TC		16			M10X16	3	5
RSU502080TC		20			M10X12	3	5
RSU502580TC		25			M10X12	3	5

- Made out of C45 material & toughen to 20+2 HRC
- Customized design can be supplied upon request. • All dimensions are in mm.



## MORSE TAPER REDUCTION SLEEVES



ITEM NAME	A	B	C	D	TYPE	SUIT FOR TOOL HOLDER	SUIT FOR TOOL DISC
RS2025MT1	25	MT1	58	61	3	BH2025CH18, BH2025CH25	STD50820, STD63820 STD80820, STD80820 HD63820, HD80820 STD801220, HD801220
RS2032MT1	32	MT1	77	80	3	BH2032CH18, BH2032CH25	
RS2032MT2	32	MT2	78	81	3	BH2032CH30, BH2032CH35	
RS2532MT1	32	MT1	77	80	3	BH2532CH30, BH2532CH40	STD80825, STD100825 HD80825, HD100825 HD125825, STD1001225 STD1251225, HD1001225 HD1251225
RS2532MT2	32	MT2	78	81	3		
RS2540MT1	40	MT1	78	81	3	BH2540CH30, BH2540CH40	
RS2540MT2	40	MT2	78	81	3		
RS2540MT3	40	MT3	79	92	3		
RS32/4040MT1	40	MT1	80	83	3	BH3240CH40, BH3240CH50 BH4040CH35	STD100832, STD125832 STD160832, HD125832 STD1251232, STD1601232 HD1251232, STD125840
RS32/4040MT2	40	MT2	80	83	3		
RS32/4040MT3	40	MT3	79	92	3		
RS32/4050MT2	50	MT2	89	92	3	BH3250CH40, BH3250CH50 BH4050CH35	
RS32/4050MT3	50	MT3	89	92	3		
RS32/4050MT4	50	MT4	92	115	3		

• Made out of EN-19 material & toughen to 40+2 HRC

• Customized design can be supplied upon request. • All dimensions are in mm.



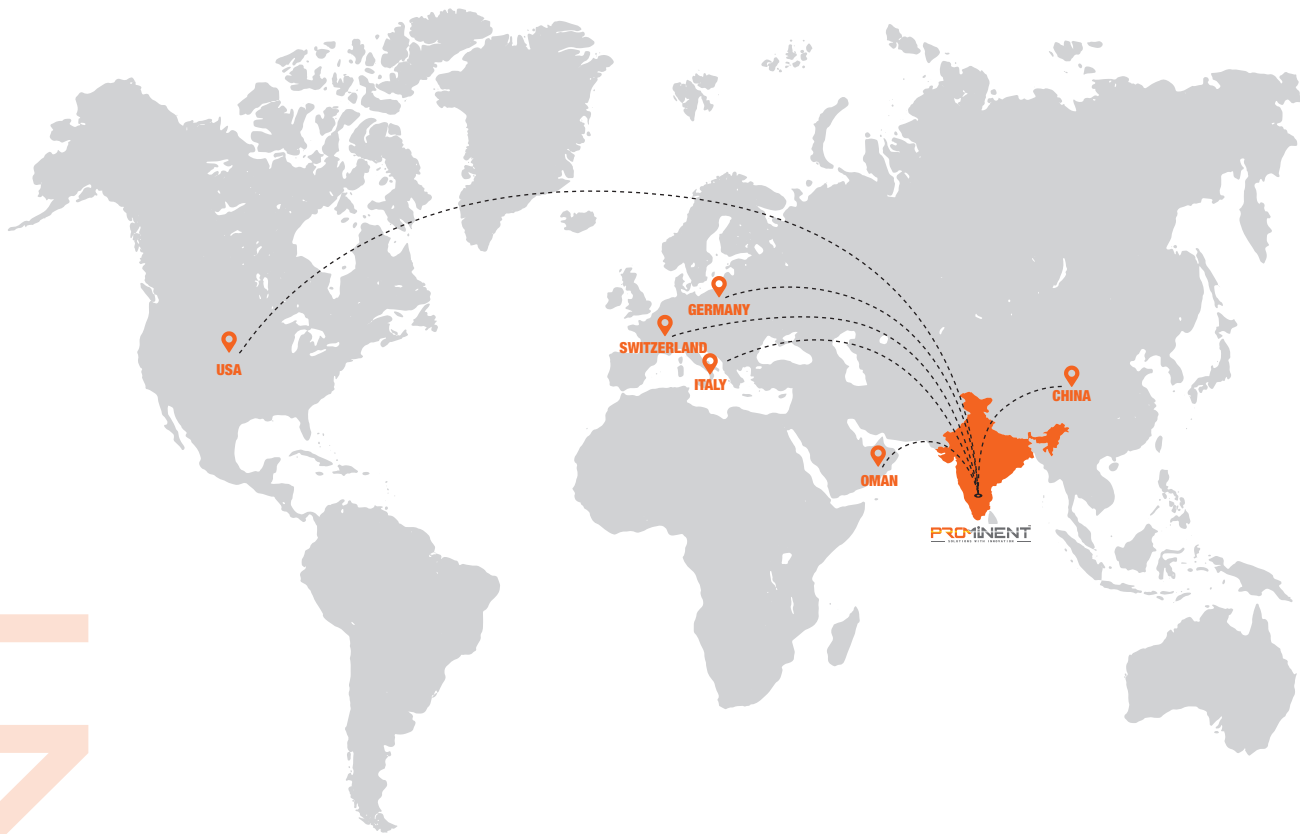


**INFRASTRUCTURE**

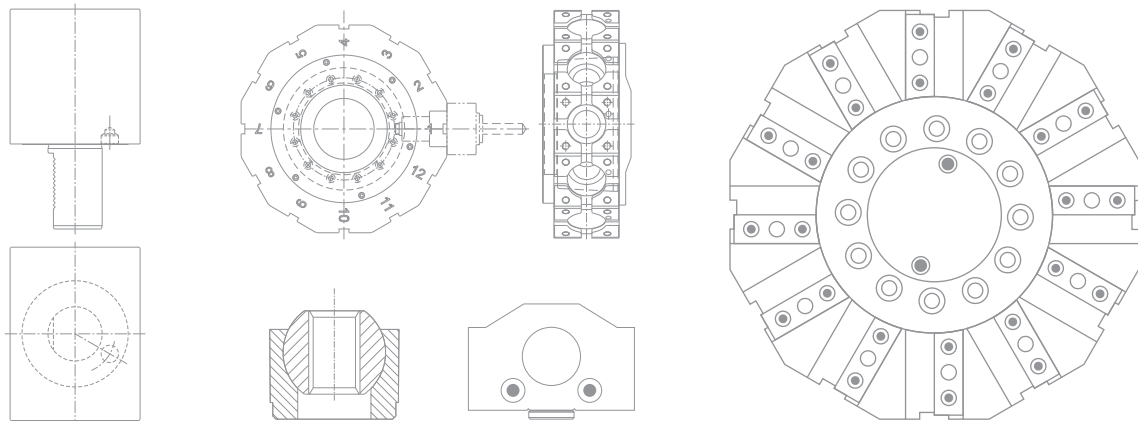


• Customized design can be supplied upon request. • All dimensions are in mm.

## Our Global Presence



# PROMINENT



**PROMINENT**<sup>TM</sup>  
SOLUTIONS WITH INNOVATION

Head Office / Manufacturing Facility

### Prominent Autotech

310×311/4, 8<sup>th</sup> Cross 4<sup>th</sup> Phase Peenya Industrial Area Near NTT, Bengaluru - 560 058.

✉ info@prominentautotech.com,  
guna@prominentautotech.com

☎ 080 2658 1755 ☎ +91 99167 01312

www.prominenttools.com

Manufacturing Extension Unit

### Prominent Machine Tools

60/61, 10<sup>th</sup> Cross, Balaji Nagar Peenya Industrial Area Thigalarapalya, Bengaluru - 560 058.

✉ prominentmachinetools@gmail.com

☎ +91 99167 01312



QR Code For  
GPS Location



QR Code For  
GPS Location